

RICE CREEK PUTNAM COUNTY, FLORIDA PROJECT CONDITION SURVEY FY21 12-FOOT PROJECT

SURVEY NOTES

- REFER TO SURVEY NO. 21-107.
 - SOUNDINGS ARE IN FEET AND TENTHS AND REFER TO NOAA'S REPORTED MEAN LOWER LOW WATER (MLLW) OF THE 1983-2001 TIDAL EPOCH.
 - ALL ELEVATIONS ARE BELOW THE CHART DATUM UNLESS PRECEDED BY A (+) SIGN.
 - PLANE COORDINATES ARE BASED ON THE TRANSVERSE MERCATOR PROJECTION FOR THE EAST ZONE OF FLORIDA AND REFERENCED TO THE NORTH AMERICAN DATUM OF 1983 (NAD83).
 - THIS SURVEY WAS PERFORMED USING REAL-TIME KINEMATIC (RTK) GPS POSITIONING WITH THE FOLLOWING REFERENCE BASE STATION:
FLORIDA PERMANENT REFERENCE NETWORK (FPRN)
 - DEPTHS DEPICTED BY THIS SURVEY ARE REFERENCED TO MLLW, TIDAL EPOCH 1983-2001 AS REPORTED BY THE NATIONAL OCEANIC AND ATMOSPHERIC ADMINISTRATION (NOAA). NOAA'S VDUTUM MODEL AND PUBLISHED TIDE STATION DATA WERE USED TO GENERATE A HYPACK KINEMATIC TIDE DATUM (KTD) MODEL. THIS KTD MODEL, BEING A COMBINATION OF THOSE TWO SOURCES, CANNOT BE CONSIDERED EQUIVALENT TO THE VDUTUM MODEL BECAUSE OF POSSIBLE ADDITIONS OR EDITS THERETO. DO NOT USE VDUTUM IN PLACE OF THE KTD FILE. THE KTD MODEL USED FOR THIS SURVEY IS "ST_JOHNSRIVER-20191202.KTD".
 - TIDAL REDUCTIONS WERE OBTAINED UTILIZING REAL-TIME KINEMATIC (RTK) GPS AND REFERENCED TO MLLW UTILIZING THE (KTD) FILE REFERENCED ABOVE, AND CALIBRATED TO THE PUBLISHED MLLW HEIGHTS OF THE BENCH MARK ASSOCIATED WITH THE TIDE GAGE SITE SPECIFIED BELOW:
NOAA TIDAL STATION 872-0774 FOR ENTIRE PROJECT (PID: AC9050)
 - VERTICAL MEASUREMENTS WERE MADE USING AN IMPACT SUBSEA ISA-500 SINGLE-FREQUENCY TRANSDUCER OPERATING AT 500 KHZ. ALL SOUNDINGS SHOWN ARE IN HIGH FREQUENCY.
- | VESSEL | DATE OF SURVEY | CUT |
|----------|----------------|------------|
| SB WELLS | 15 APR 2021 | RICE CREEK |
- AIDS TO NAVIGATION WERE LOCATED DURING THIS SURVEY.
 - THE INFORMATION DEPICTED ON THIS MAP REPRESENTS THE RESULTS OF SURVEYS MADE ON THE DATES INDICATED ABOVE AND CAN ONLY BE CONSIDERED AS INDICATING THE GENERAL CONDITIONS AT THAT TIME. THIS CHART IS SOLELY FOR THE DISTRIBUTION OF AVAILABLE DEPTHS AT THE TIME OF THE SURVEY.
 - SURVEY ACCURACY PERFORMANCE STANDARDS, QUALITY CONTROL, AND QUALITY ASSURANCE REQUIREMENTS WERE FOLLOWED DURING THIS SURVEY IN ACCORDANCE WITH USACE EM 1110-2-1003, HYDROGRAPHIC SURVEYING, 30 NOV 2013.

LEGEND	
	MONUMENT
	LIGHTED BEACON
	GREEN DAYBEACON
	RED DAYBEACON
	RED LIGHTED BUOY
	GREEN LIGHTED BUOY
	CAN BUOY
	NUN BUOY
	TIDE STAFF
	PROJECT DEPTH

US Army Corps of Engineers
Jacksonville District
SAFETY ON THIS JOB
DEPENDS ON YOU

Checked by:	GHR	Designed by:	WRM	Drawn by:	WRM	File No.:	21-107-01	Date:	APR 2021
DEPARTMENT OF THE ARMY JACKSONVILLE DISTRICT, CORPS OF ENGINEERS JACKSONVILLE, FLORIDA									
RICE CREEK PUTNAM COUNTY, FLORIDA PROJECT CONDITION SURVEY FY21 12-FOOT PROJECT INDEX, LOCATION AND VICINITY MAP									
Scale: AS SHOWN Drawing no. 1									
SHEET 01 OF 07									



MAP LABEL	AIDS TO NAVIGATION	PLANE COORDINATES		LATITUDE	LONGITUDE
		X	Y		
R-2*	DBN-2 (04/21)	458533	11849787	29°41'43.63"	81°38'17.55"
G-3*	DBN-3 (04/21)	458467	11849606	29°41'49.97"	81°38'18.27"
R-42A*	BUOY-42A (04/21)	458385	11849853	29°41'44.79"	81°38'18.95"



US Army Corps of Engineers
 Jacksonville District
SAFETY ON THIS JOB DEPENDS ON YOU

Date	

DEPARTMENT OF THE ARMY
 JACKSONVILLE DISTRICT, CORPS OF ENGINEERS
 JACKSONVILLE, FLORIDA

Designed by: WRM
 Drawn by: WRM
 File No.: 21-107-G-S-BR-04.DGN
 Date: APR 2021
 File name: 21-107-G-S-BR-04.DGN

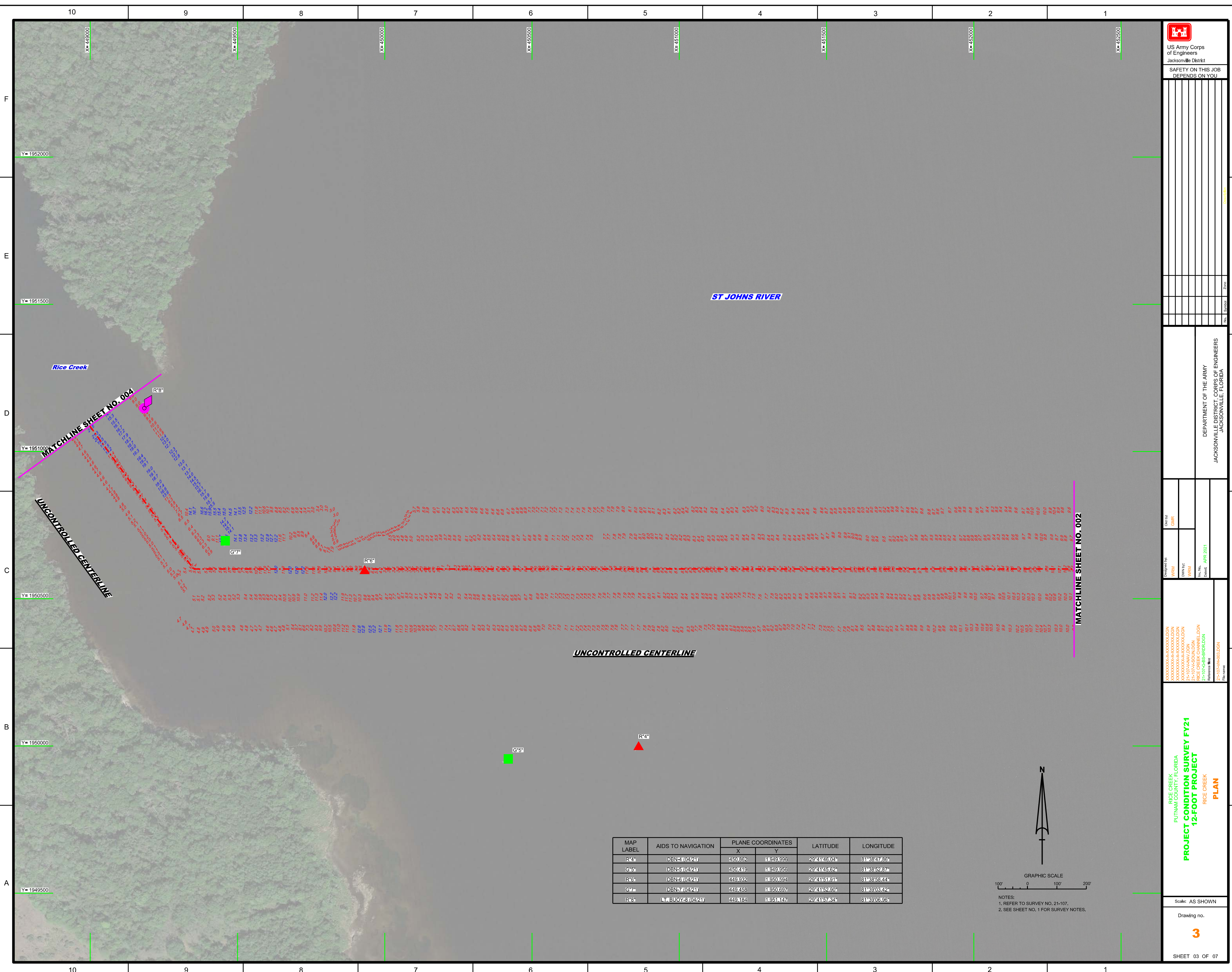
Check by: GHR
 File No.: 21-107-G-S-BR-04.DGN

PROJECT CONDITION SURVEY FY21
12-FOOT PROJECT
 RICE CREEK AT ST JOHNS RIVER
PLAN

Scale: AS SHOWN
Drawing no.

2

SHEET 02 OF 07



MAP LABEL	AIDS TO NAVIGATION	PLANE COORDINATES		LATITUDE	LONGITUDE
		X	Y		
R4	DBN-1(04/21)	450,692	11849,896	29°41'46.00"	81°39'47.86"
G5	DBN-5(04/21)	450,416	11849,956	29°41'45.62"	81°39'52.87"
R6	DBN-3(04/21)	449,532	11850,524	29°41'45.91"	81°39'53.44"
G7	DBN-7(04/21)	449,458	11850,697	29°41'52.90"	81°39'03.42"
R8	LT-BUOY-8(04/21)	449,184	11851,147	29°41'57.83"	81°39'03.95"

NOTES:
 1. REFER TO SURVEY NO. 21-107.
 2. SEE SHEET NO. 1 FOR SURVEY NOTES.

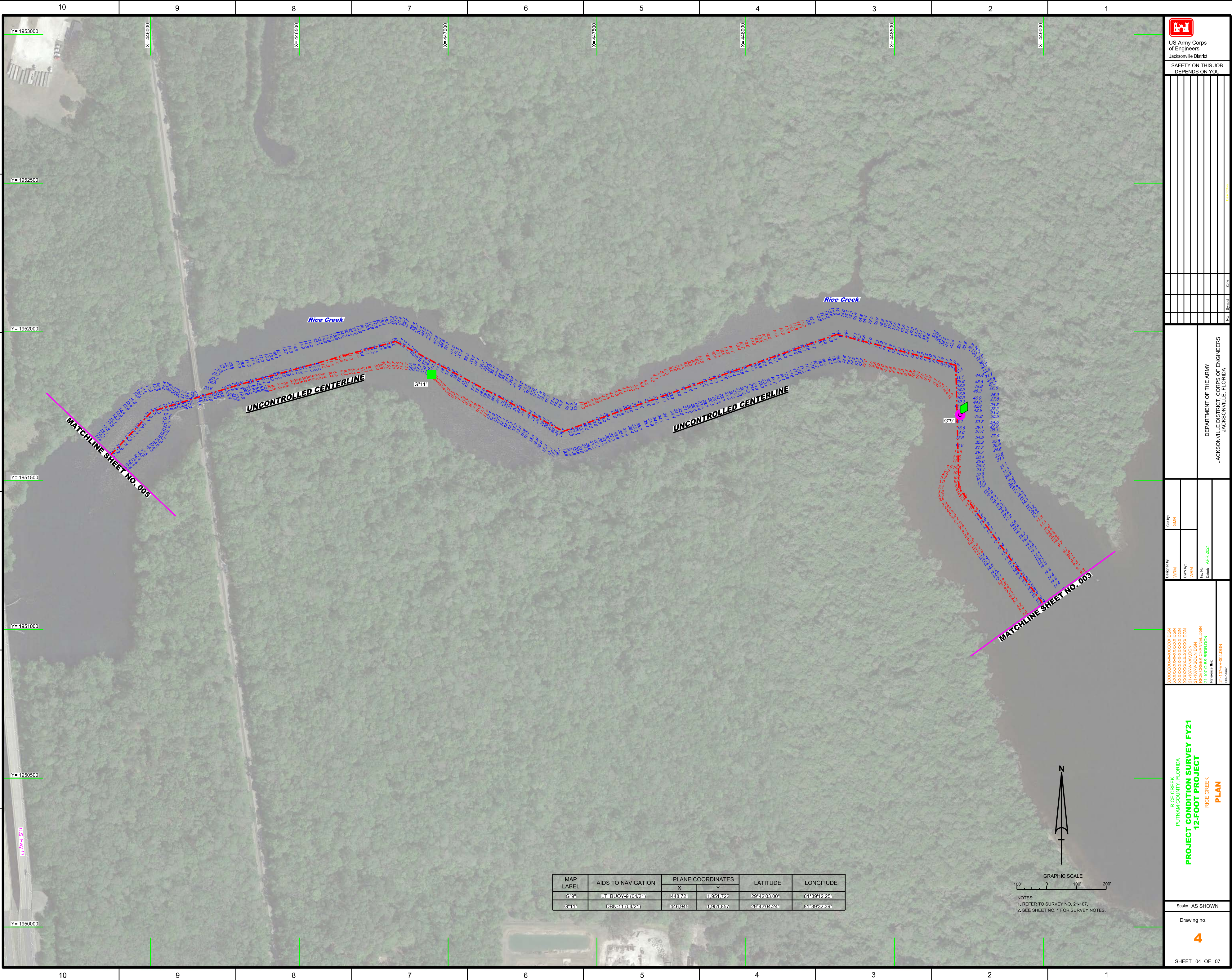
US Army Corps of Engineers
 Jacksonville District
 SAFETY ON THIS JOB DEPENDS ON YOU

Drawn by: WRM	Checked by: GHR
Designated by: WRM	Reviewed by: WRM
File name: 21-107-03-BR-04.DGN	Date: APR 2021

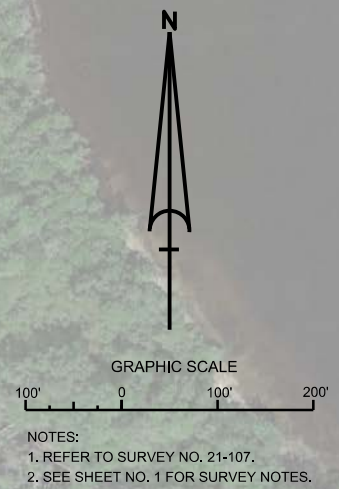
DEPARTMENT OF THE ARMY
 JACKSONVILLE DISTRICT, CORPS OF ENGINEERS
 JACKSONVILLE, FLORIDA


RICE CREEK
 PUTNAM COUNTY, FLORIDA
PROJECT CONDITION SURVEY FY21
 RICE CREEK
12-FOOT PROJECT
PLAN

Scale: AS SHOWN
 Drawing no. **3**
 SHEET 03 OF 07



MAP LABEL	AIDS TO NAVIGATION	PLANE COORDINATES		LATITUDE	LONGITUDE
		X	Y		
G-9*	LT. BUOY-3 (04/21)	448,721	1,951,722	29°42'03.00"	81°39'12.25"
G-11*	DBN-11 (04/21)	446,945	1,951,857	29°42'04.24"	81°39'32.39"





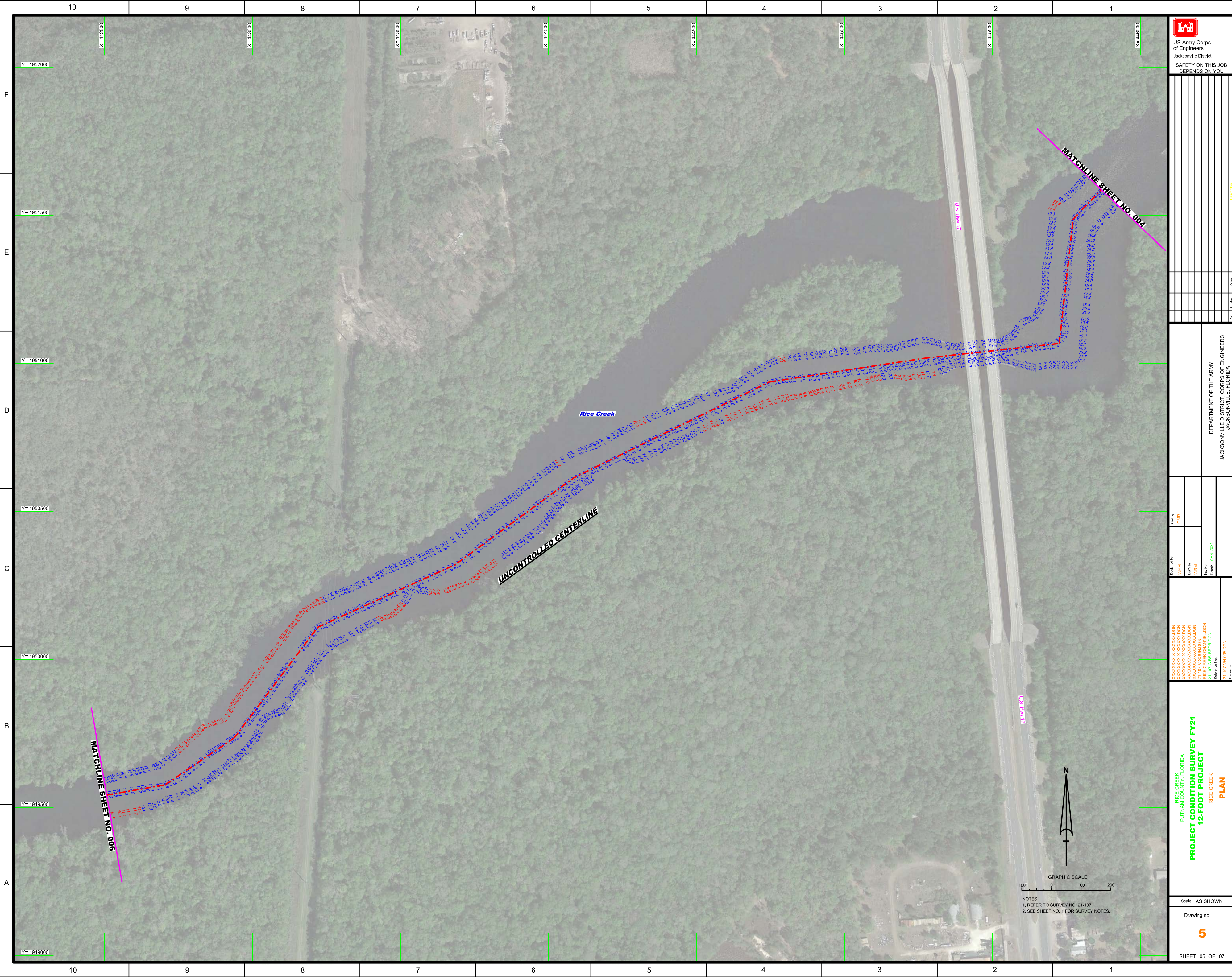
US Army Corps
of Engineers
Jacksonville District

SAFETY ON THIS JOB
DEPENDS ON YOU

DEPARTMENT OF THE ARMY JACKSONVILLE DISTRICT, CORPS OF ENGINEERS JACKSONVILLE, FLORIDA	Drawn by: WRM Design: APR 2021 Check: APR 2021
--	---

RICE CREEK PUTNAM COUNTY, FLORIDA PROJECT CONDITION SURVEY FY21 12-FOOT PROJECT RICE CREEK PLAN	Scale: AS SHOWN Drawing no. 4
---	--

SHEET 04 OF 07



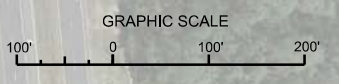
US Army Corps of Engineers
 Jacksonville District
SAFETY ON THIS JOB DEPENDS ON YOU

DEPARTMENT OF THE ARMY
 JACKSONVILLE DISTRICT, CORPS OF ENGINEERS
 JACKSONVILLE, FLORIDA

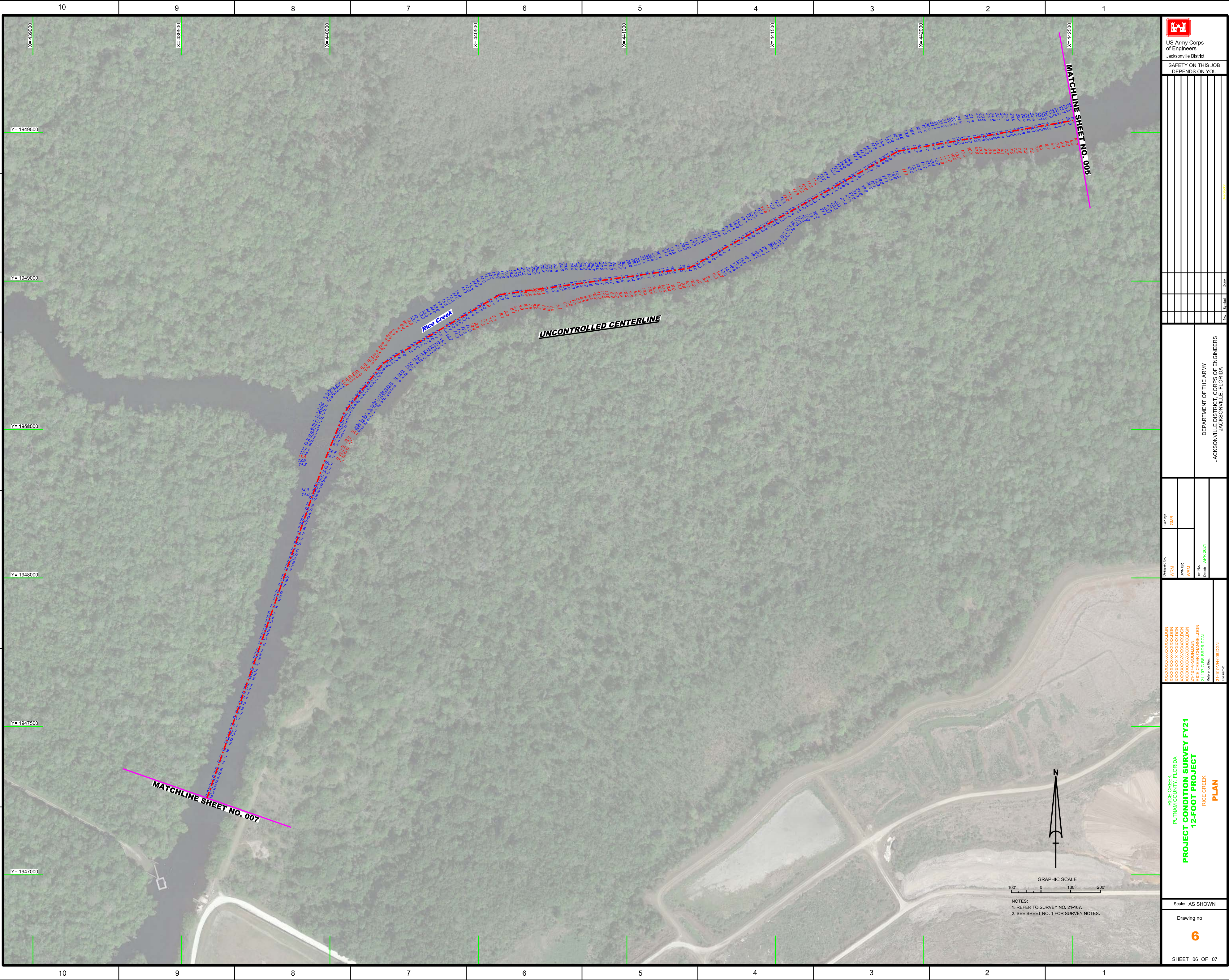
Check by: GHR
 Designed by: WRM
 Drawn by: WRM
 Date: APR 2021
 Reference File: 21-107-MH-R06.DGN
 File name: 21-107-MH-R06.DGN


RICE CREEK
 PUTNAM COUNTY, FLORIDA
**PROJECT CONDITION SURVEY FY21
 12-FOOT PROJECT
 PLAN**

Scale: AS SHOWN
 Drawing no.
5
 SHEET 05 OF 07



NOTES:
 1. REFER TO SURVEY NO. 21-107.
 2. SEE SHEET NO. 1 FOR SURVEY NOTES.



 US Army Corps of Engineers
Jacksonville District
SAFETY ON THIS JOB
DEPENDS ON YOU

No.	Symbol	Zone

DEPARTMENT OF THE ARMY
JACKSONVILLE DISTRICT, CORPS OF ENGINEERS
JACKSONVILLE, FLORIDA

Checked By:	GMR
Designed By:	WRM
Drawn By:	WRM
File No:	2-107-G-BB-BR/ALDGN
Date:	APR 2021
Reference File:	2-107-H-006/ALDGN

RICE CREEK
PUTNAM COUNTY, FLORIDA
PROJECT CONDITION SURVEY FY21
12-FOOT PROJECT
RICE CREEK
PLAN

Scale: AS SHOWN
Drawing no.
6
SHEET 06 OF 07

GRAPHIC SCALE
100' 0 100' 200'
NOTES:
1. REFER TO SURVEY NO. 21-107.
2. SEE SHEET NO. 1 FOR SURVEY NOTES.



10
9
8
7
6
5
4
3
2
1
Y=1947500
Y=1947000
Y=1946500
Y=1946000
Y=1945500
Y=1945000
Y=1944500
F
E
D
C
B
A

US Army Corps of Engineers Jacksonville District	
SAFETY ON THIS JOB DEPENDS ON YOU	
DEPARTMENT OF THE ARMY JACKSONVILLE DISTRICT, CORPS OF ENGINEERS JACKSONVILLE, FLORIDA	
Designed By: WRM Drawn By: WRM File No: WRM Date: APR 2021	Checked By: GMR Date: APR 2021
PROJECT CONDITION SURVEY FY21 12-FOOT PROJECT RICE CREEK PLAN	
Scale: AS SHOWN	
Drawing no. 7	
SHEET 07 OF 07	

NOTES:
 1. REFER TO SURVEY NO. 21-107.
 2. SEE SHEET NO. 1 FOR SURVEY NOTES.